

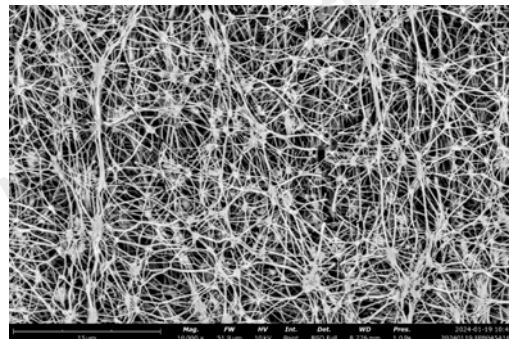
PTFE Hydrophobic Membrane for Venting



OUR MEMBRANE FOR YOUR SOLUTIONS

MS-TM-E-4013-EN A/1

The PTFE hydrophobic breathable membrane of MS is prepared by mechanically stretching and sintering PTFE particles. According to application requirements, the stretched ePTFE membrane can be thermally compounded with different materials to enhance its mechanical strength. It is widely used in the chemical, pharmaceutical, food, and automotive industries as a key material for breathable packaging, pressure balancing accessories, heat dissipation films, and other applications. Our unique process creates a product with high peel strength, stable and uniform mechanical properties, making it easy to cut, and can be welded or sealed into a device or patch. MS hydrophobic PTFE Venting membranes are optimized for venting applications where high air/gas flow rates and high water entry pressure are required.



- High water entry pressure
- Excellent air/gas permeability
- Uniform
- Strong mechanical properties
- Broad chemical resistance and high temperature stability

- Inline gas or air filtration devices
- Venting devices
- Package or enclosure venting
- Dust collectors and baghouse filters
- Coalescing
- Hydrophobic barriers

[illegible]

OUR MEMBRANE FOR YOUR SOLUTIONS

Specification

Membrane Type	Pore Size (μm)	Air Flux (L/min/cm ² @1psi)	Water Entry Pressure (psi)	Remarks
Unsupported	0.10	≥0.5	≥72.5	The thickness of the PTFE film and support can be customized
	0.22	≥0.8	≥65.3	
	0.45	≥1.2	43.5-58.0	
	1.0	3-6	17.4-29.0	
	3.0	4.5-8	≥14.5	
	5.0	8-10	≥4.35	
	10	10-15	/	
Supported	0.10	≥0.25	≥72.5	
	0.22	≥0.4	≥65.3	
	0.45	≥0.6	≥43.5	
	1.0	1.2-2	≥17.4	
	3.0	1.7-3	≥14.5	
	5.0	≥3.5	≥4.35	
	10	≥5	/	

Ordering information

Series Code	Pore Size	Support Material Code
VET	010=0.1μm 022=0.22μm 045=0.45μm 100=1.0μm 300=3.0μm 500=5.0μm	A12 (100-200μm) —PP Support A16 (200-300μm) —PP Support H60 (170-230μm) —PE/PP Support H80 (230-280μm) —PE/PP Support B51 (130-170μm) —PET Support N (5-30μm) —Without Support



Phone: 001-866-528-4572
 Email: info@membrane-solutions.com
 Address: 4530 B STREET NW #A, AUBURN WA 98001, USA



China

Phone: 400-821-1812
 Email: info@membrane-solutions.com
 Address: 2202, No.1759 North Zhongshan Road, Shanghai 200061