

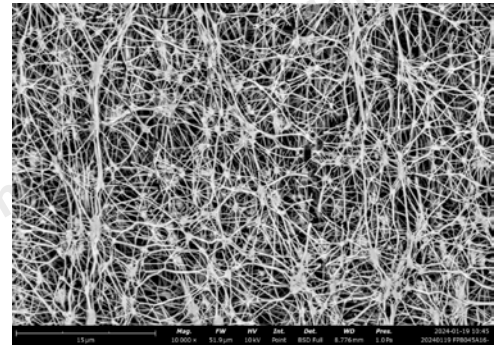
Hydrophobic PTFE Membrane



OUR MEMBRANE FOR YOUR SOLUTIONS

MS-TM-E-4003-EN A/1

The PTFE hydrophobic filtration membrane of MS is prepared by mechanically stretching and sintering PTFE particles. According to application requirements, the stretched ePTFE membrane can be thermally compounded with different materials to enhance its mechanical strength. It is a key material for solvent and oil filtration applications in the chemical, pharmaceutical, food, and automotive industries. Our unique process creates a product with high peel strength, stable and uniform mechanical properties. MS hydrophobic PTFE membranes are optimized for the filtration of both liquids, air and gases. They provide excellent performance in aggressive chemical and high temperature applications where fine filtration, compatibility and purity are required.



- Hydrophobic
- Broad chemical resistance and high temperature stability
- High flux, low extractables
- Good uniformity
- High mechanical strength
- Easy to weld

- Solvent filtration
- Biopharm industry, Microelectronics, fine
- Chemicals, Laboratory
- Dust collectors and baghouse filters
- Coalescing

[illegible]

0.45µm Hydrophobic PTFE Membrane

Specification

Membrane Type	Pore Size (μm)	Thickness (μm)	Ethanol Flow Rate (ml/min/cm ²) (23°C, Δp=-10psi)	60% IPA Bubble Point (23°C, psi)	Particle Retention Efficiency	Remarks
Unsupported	0.03	12-15	5.32-5.32	58.6-85.9	/	The thickness of the PTFE film and support can be customized
	0.05	10-20	4.5-5.32	57.1-83.0	94.32%@0.05μm	
	0.1	10-20	4.14-5.37	49.7-68.6	95.65%@0.1μm	
	0.22	10-20	12.7-14.9	45.3-047.3	96.56%@0.3μm	
	0.45	10-20	16.42-18.63	70.6-90.9	95.78%@0.5μm	
	1.0	8-15	41.94-62.78	48.2-60.2	/	
	3.0	8-15	221.02-275.92	16.1-20.9	/	
	5.0	8-15	275.92-291.39	17.4-19.3	/	
	10	6-15	445-479	9.4-12.6	/	
	0.05	130-190, 200-280	9.3-10.6	50.3-52.5	87.12%@0.05μm	
Supported	0.1	130-190, 200-280	21.4-23.9	34.1-35.5	85.32%@0.1μm	
	0.22	130-190, 200-280	29.36-34.49	24.9-25.7	96.43%@0.3μm	
	0.45	130-190, 200-280	58.3-69.6	13.3-16.2	95.18%@0.5μm	
	1.0	130-190, 200-280	115.7-142.9	6.1-6.9	/	
	3.0	130-190, 200-280	166.62-189.92	5.9-6.5	/	
	5.0	130-190, 200-280	228-264.5	/	/	
	10	130-190, 200-280	452.3-536.7	/	/	

Ordering Information

Series Code	Pore Size	Support Material Code
FPB	010=0.1μm 022=0.22μm 045=0.45μm 100=1.0μm 300=3.0μm 500=5.0μm	A12—PP Support A16—PP Support H60—PE/PP Support H80—PE/PP Support B51—PET Support N—Without Support



Phone: 001-866-528-4572
Email: info@membrane-solutions.com
Address: 4530 B STREET NW #A, AUBURN WA 98001, USA



China

Phone: 400-821-1812
Email: info@membrane-solutions.com
Address: 2202, No.1759 North Zhongshan Road, Shanghai 200061